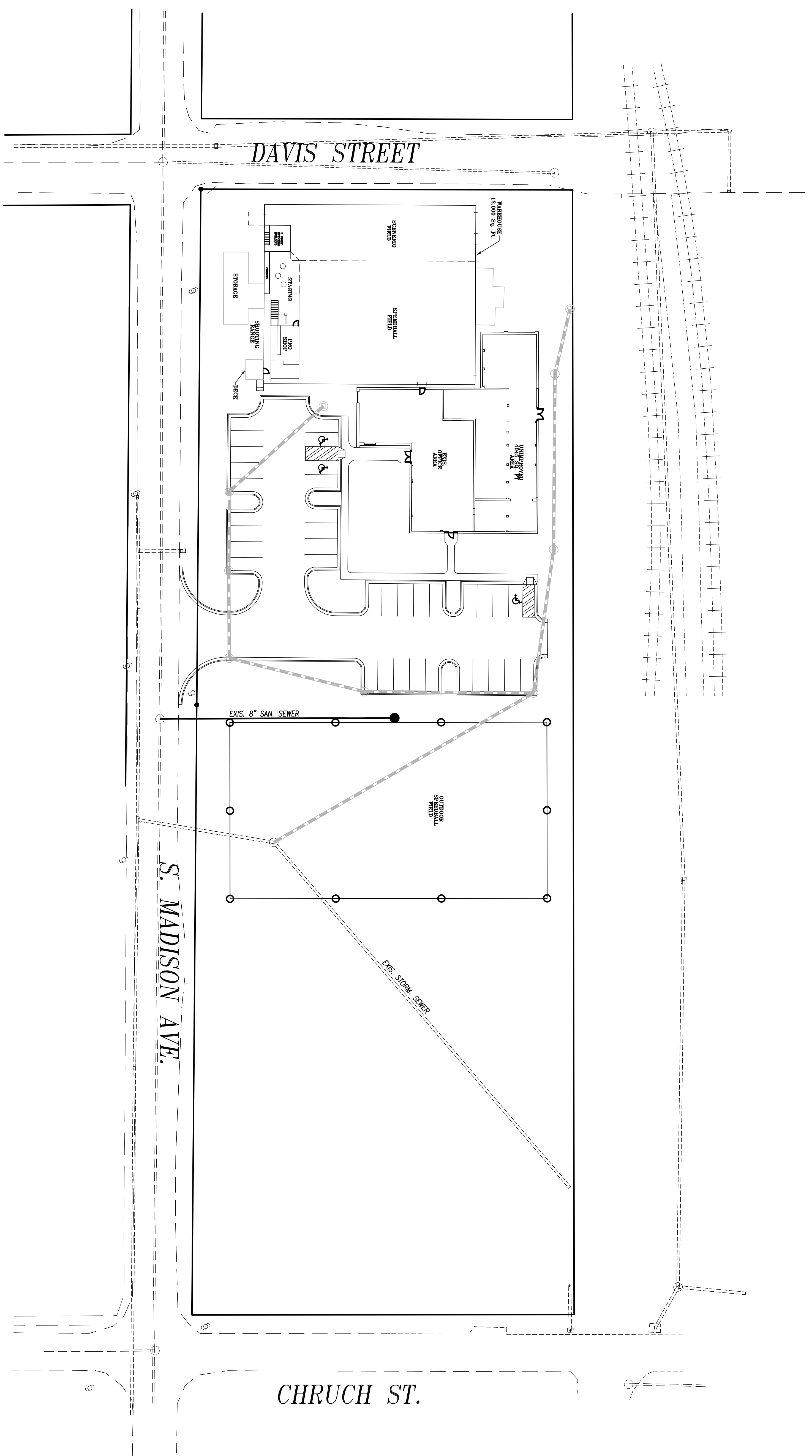
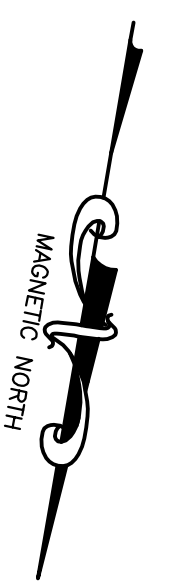
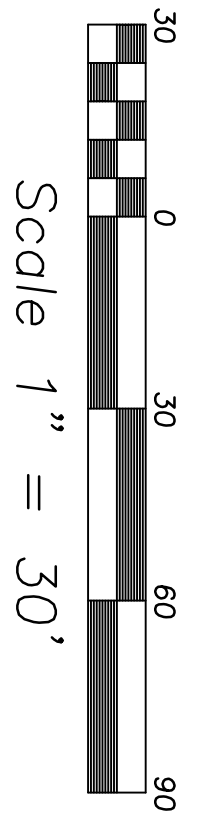


- LEGEND:**
- UGS— UNDERGROUND GAS LINE
 - W— UNDERGROUND WATER LINE
 - X- EXISTING FENCE LINE
 - UGT- UNDERGROUND TELEPHONE LINE
 - UGP- UNDERGROUND POWER LINE
 - OHP- OVERHEAD POWER LINE
 - R/W RIGHT OF WAY
 - CMP CORRUGATED METAL PIPE
 - RCF REINFORCED CONCRETE PIPE
 - R. RADIUS
 - C/L CENTERLINE
 - EDP EDGE OF PAVEMENT
 - EDP EDGE OF PAVEMENT
 - LD LID
 - HW HEADWALL
 - UP UTILITY POLE
 - GW GUY WIRE
 - FH FIRE HYDRANT
 - MH MANHOLE



Revision	No.	Date

NOT RELEASED FOR CONSTRUCTION

Site Plan
Job 03-015
Date 11/15/07

Sheet
1

Civil Engineering
Land Planning
Construction Management
320 S. Madison Ave.
Monroe, Georgia 30655
Phone (770) 287-4703
Fax (770) 287-9479

These drawings remain the property of Brewer & Dudley and may not be reproduced without written permission.

The Cotton Gin Property
S. Madison Ave. & Church St.
Monroe, GA

Owner / Developer
Brewer and Dudley, LLC.
320 S. Madison Ave.
Monroe, GA 30655